

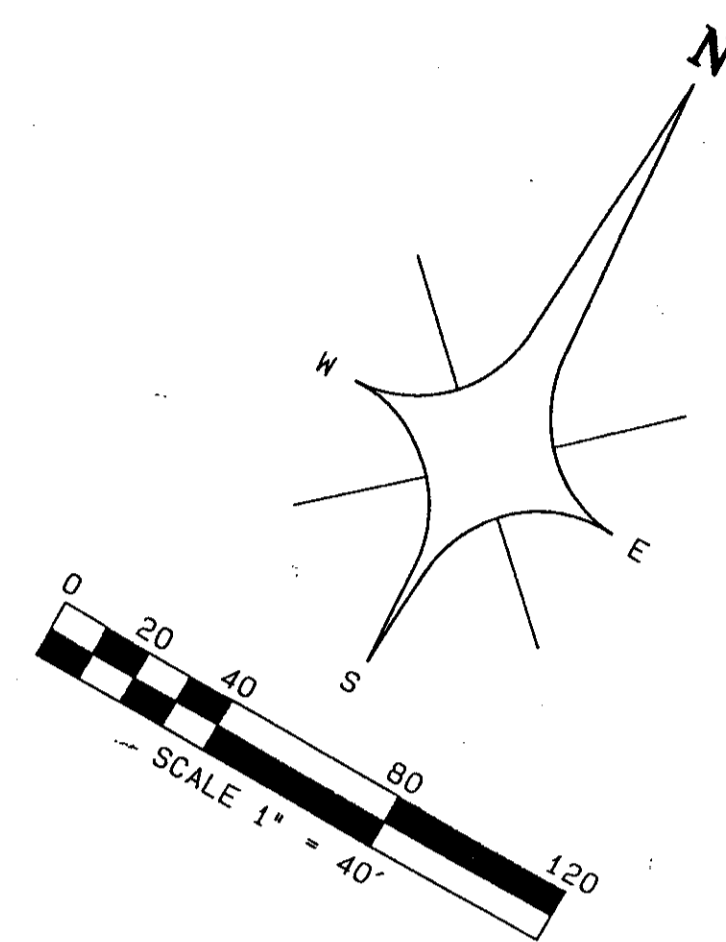
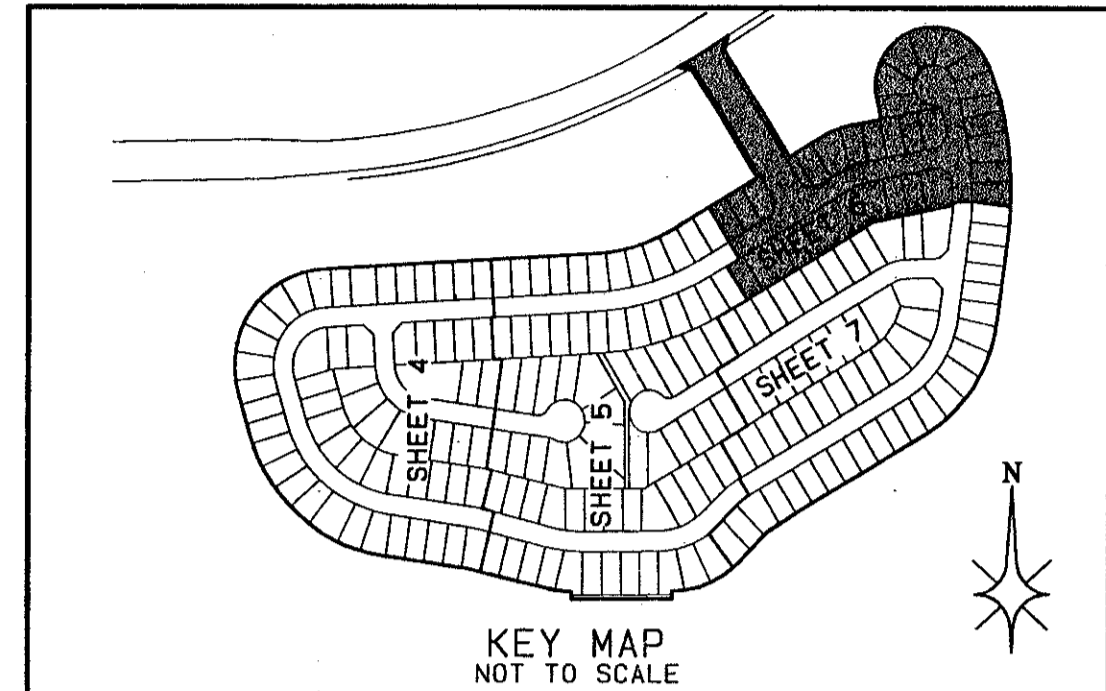
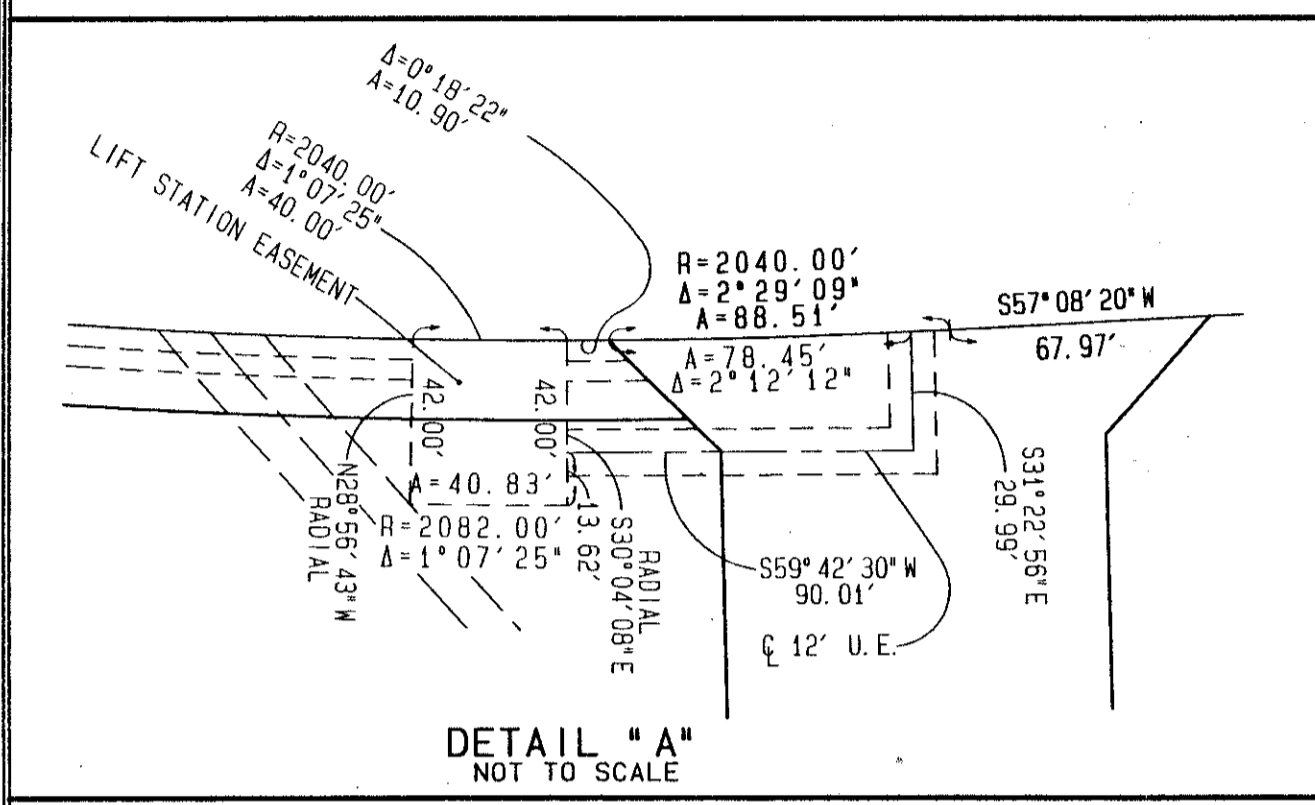
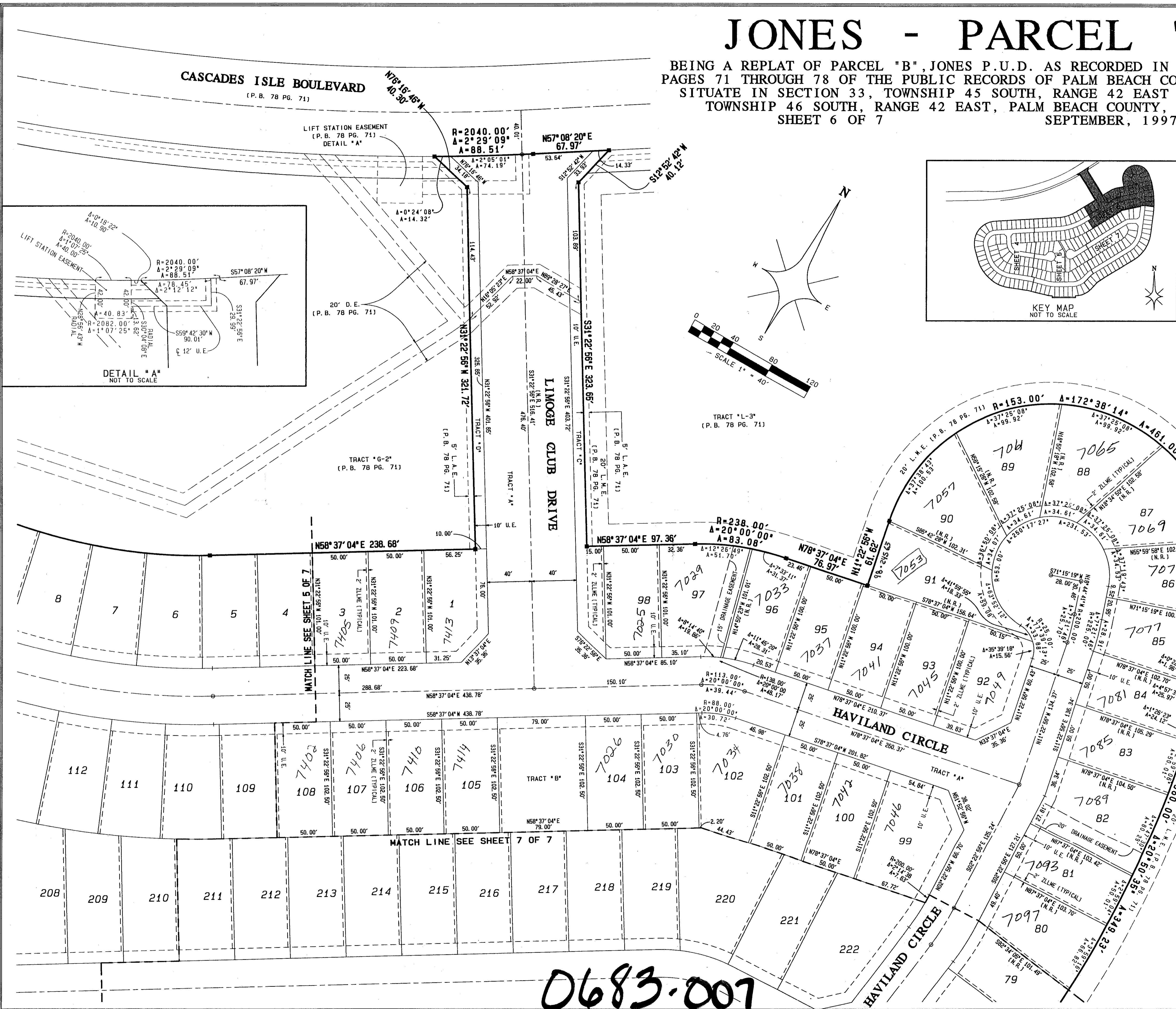
# JONES - PARCEL "B"

0683-007

# 195

BEING A REPLAT OF PARCEL "B", JONES P.U.D. AS RECORDED IN PLAT BOOK 78, PAGES 71 THROUGH 78 OF THE PUBLIC RECORDS OF PALM BEACH COUNTY, FLORIDA SITUATE IN SECTION 33, TOWNSHIP 45 SOUTH, RANGE 42 EAST AND SECTION 4, TOWNSHIP 46 SOUTH, RANGE 42 EAST, PALM BEACH COUNTY, FLORIDA  
 SHEET 6 OF 7  
 SEPTEMBER, 1997

STATE OF FLORIDA } SS  
 COUNTY OF PALM BEACH }  
 THIS PLAT WAS FILED FOR  
 RECORD AT \_\_\_\_\_ DAY OF  
 THIS \_\_\_\_\_ MONTH, 1997 AND  
 DULY RECORDED IN PLAT BOOK  
 \_\_\_\_\_ ON PAGES \_\_\_\_\_ AND  
 \_\_\_\_\_  
 DOROTHY H. WILKEN, CLERK  
 CIRCUIT COURT  
 BY: \_\_\_\_\_ DC



- LEGEND:
- A = CENTRAL ANGLE/DELTA
  - C = CENTERLINE
  - CHL = CHORD
  - D.B. = DEED BOOK
  - D.E. = DRAINAGE EASEMENT
  - F.P. & L. = FLORIDA POWER AND LIGHT COMPANY
  - L = ARC LENGTH
  - L.A.E. = LIMITED ACCESS EASEMENT
  - L.M.A.E. = LAKE MAINTENANCE ACCESS EASEMENT
  - L.M.E. = LAKE MAINTENANCE EASEMENT
  - L.W.D. = LAKE WORTH DRAINAGE DISTRICT
  - N.R. = NON-RADIAL
  - N.T.S. = NOT TO SCALE
  - O.R.B. = OFFICIAL RECORDS BOOK
  - P.B. = PLAT BOOK
  - PG. = PAGE
  - P.O.B. = POINT OF BEGINNING
  - P.O.C. = POINT OF COMMENCEMENT
  - R = RADIUS (RADII)
  - R.F. = RADIAL TO FRONT LOT LINE
  - R.R. = RADIAL TO REAR LOT LINE
  - R/W = RIGHT OF WAY
  - U.E. = UTILITY EASEMENT
  - W.C. = WITNESS CORNER
  - Z.L.L.M.E. = ZERO LOT LINE MAINTENANCE EASEMENT
  - = PERMANENT CONTROL POINT (PCP)
  - PCP #5219
  - = PERMANENT REFERENCE MONUMENT (PRM)
  - SET PRM #5219

PET. 95-19  
 ALLOC. #0001  
 5/3/3/K

R=300.00'  
 A=5° 20' 02"  
 A=27.93'

TRACT "L-3"  
 (P.B. 78 PG. 71)

8/1/95

0683-007

SUBDIVISION # \_\_\_\_\_  
 BOOK # \_\_\_\_\_  
 PAGE # \_\_\_\_\_  
 FLOOD MAP # \_\_\_\_\_  
 ZONING # \_\_\_\_\_  
 FUD # \_\_\_\_\_  
 ZIP CODE # \_\_\_\_\_  
 PUD NAME \_\_\_\_\_